

SCAFFOLDING DIVISION



ANDHRA PRADESH

KARNATAKA

WEST BENGAL

ORISSA

www.paamgroup.com

INSPIRED

BY

QUALITY

AND

SERVICE

Paam Group is a leading contract manufacturer, supplier and exporter of building materials. With more than three decades of experience we provide a one stop solution for all types of scaffolding and shuttering products.

It has traditionally been our endeavor to provide quality materials coupled with committed services. As we all know that construction of any kind is a complex process involving varied materials along with customization; we do not limit ourselves to our standard range of products. We often customize the products as per our customers' specific requirements. The experience gathered by us helps us to provide our clients with the most optimum products at the best prices.

We continuously strive towards providing the best products and have always been the first to provide our customers with innovative and improved products. Our commitment to customers' is highlighted by the fact that we are willing to entertain enquiries for special products that are not part of our range.

Though we have our base office at Hyderabad, we have spread our wings to other geographical locations. Our branches are strategically located in Andhra Pradesh, Karnataka, Orissa and West Bengal so as to enable us cater to customers across India with right material at the right place. More branches are in the offing, to help us serve you better.

We have a large clientele which includes some of the most prestigious and world-renowned names in the industry.

SCAFFOLDING & SHUTTERING PRODUCTS

- Cuplock System
- Kwick Stage System
- H-Frames
- Walk Way Jally
- Steel Tubes
- Acro Spans
- Props & Jacks
- Column Clamps
- Base Plate
- Pressed and Forged Couplers
- Joint Pin
- Tie Rod
- Shikanja
- Formwork Accessories & Many More . . .

BITUMINIZED EXPANSION JOINT FILLER BOARDS

WOOD PRODUCTS

- Film- Faced Densified Shuttering Plywoods
- Wooden Batterns
- Flush Doors
- Laminated Veneer Lumber
- H/I Beams

CUP LOCK SYSTEM



VERTICAL STANDARD
ITEM CODE : PG -1001

Size (Mtr.)	WT. (Kg)
1.0	4.60
1.0	6.10
1.5	6.80
1.8	8.50
2.0	9.30
2.3	10.50
2.5	11.30
3.0	13.80

LEDGER
ITEM CODE : PG -1002

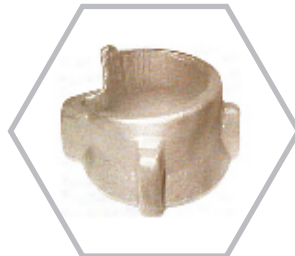
Size (Mtr.)	WT. (Kg)
0.60	2.60
0.90	3.50
1.00	3.90
1.20	4.40
1.30	4.80
1.60	5.70
1.80	6.30
2.50	8.80

INTERMEDIATE TRANSOM
ITEM CODE : PG -1003

Size (Mtr.)	WT. (Kg)
0.565	3.70
0.795	4.70
1.200	6.10
1.300	6.40
1.800	8.10
2.500	11.20



Bottom Cup
PG - 1004



Top Cup Four Lug (Forged)
PG - 1005



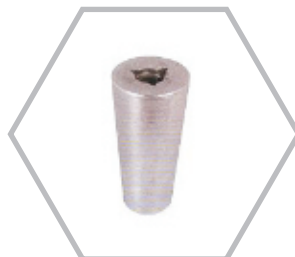
Top Cup Four Lug (Casted)
PG - 1006



Top Cup Three Lug (Forged)
PG - 1007



Spigot
PG - 1008



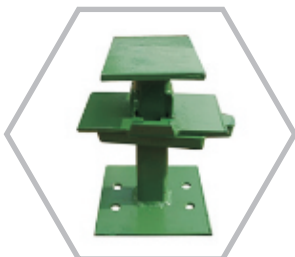
Steel Cone
PG - 1009



Ledger Swivel
PG - 1010



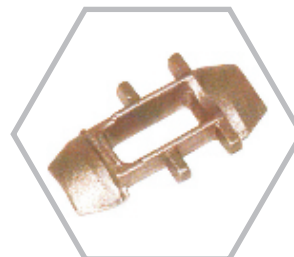
Ledger Blade
PG - 1011



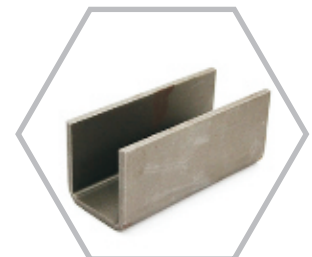
Drop Head
PG - 1102



Wedge Plate
PG - 1013

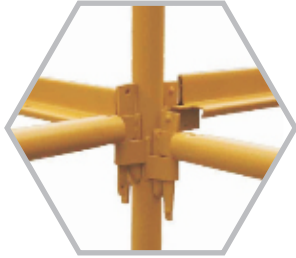


Transom Blade
PG - 1014



Transom
PG - 1015

KWICK STAGE SYSTEM



VERTICAL STANDARD
ITEM CODE : PG -1016

Size (Mtr.)	WT. (Kg)
1.0(3'.3")	6.20
2.0(6'.6")	11.70
3.0(9'.9")	17.20

LEDGER
ITEM CODE : PG -1017

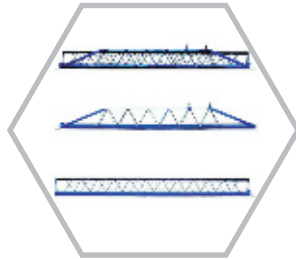
Size (Mtr.)	WT. (Kg)
1.2(4')	5.55
1.8(6')	6.95
2.4(8')	8.85

BOARD BRACKET
ITEM CODE : PG -1018

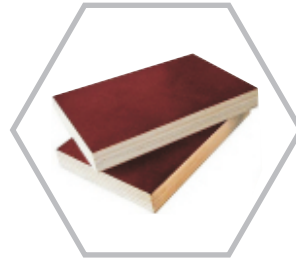
Size (Mtr.)	WT. (Kg)
1.2(4')	9.70
1.8(6')	13.10
2.4(8')	16.05



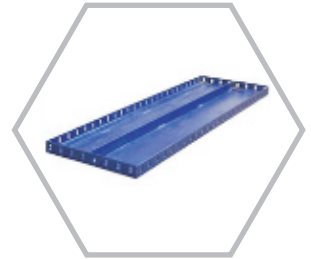
H - Frame
PG - 1019



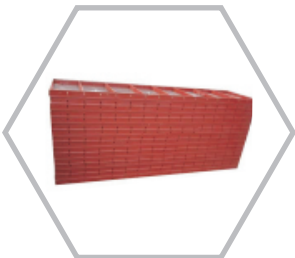
Acro Span
PG - 1020



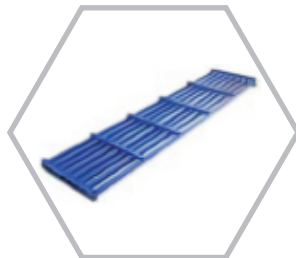
Shuttering Plywood
PG - 1021



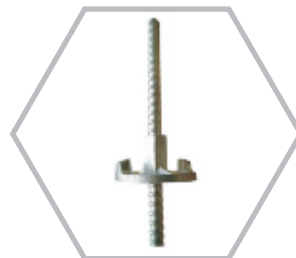
Wall Form Panels
PG - 1022



Plywood Wall Form Panels
PG - 1023



Walk Way Jolly
PG - 1024



Tie Rod
PG - 1025



Column Clamp
PG - 1026



Prop Base
PG - 1027



Steel Tubes
PG - 1028

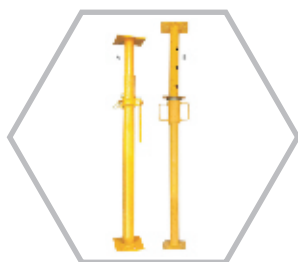


Gogo Clamp
PG - 1029



Castor Wheel
PG - 1030

JACKS & PROPS



Adjustable Prop
PG - 1031



Push-Pull Prop
PG - 1032



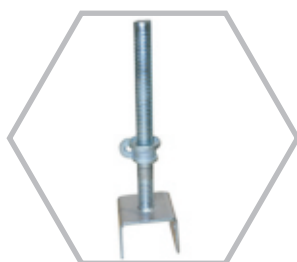
Universal Jack (Solid)
PG - 1033



Universal Jack (Hollow)
PG - 1034



U - Head Jack (Hollow)
PG - 1035



U - Head Jack (Solid)
PG - 1036



U - Head Jack Wide (Solid)
PG - 1037



Fork Head Jack
PG - 1038



Swivel Base Jack
PG - 1039



Base Jack (Solid)
PG - 1040



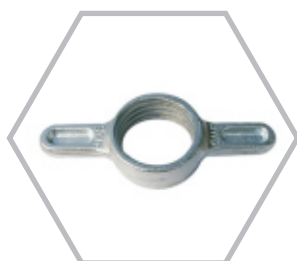
Base Jack (Hollow)
PG - 1041



Base Plate
PG - 1042



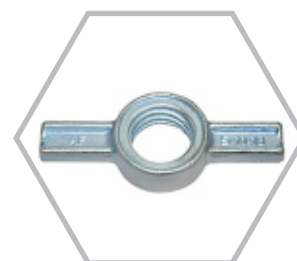
Prop Sleeve With Handle
PG - 1043



Prop Nut (Forged)
PG - 1044



Jack Nut (Casted)
PG - 1045



Jack Nut (Forged)
PG - 1046



Jack Nut With Handle (Forged)
PG - 1047



Jack Nut With Handle (Casted)
PG - 1048



Jack Nut (L&T Type)
PG - 1049



Jack Nut
PG - 1050



Fixed Double Coupler
PG - 1051



Swivel Coupler
PG - 1052



Grave Lock Coupler
PG - 1053



Half Swivel Coupler
PG - 1054



Put Log Coupler
PG - 1055



Retaining Coupler
PG - 1056



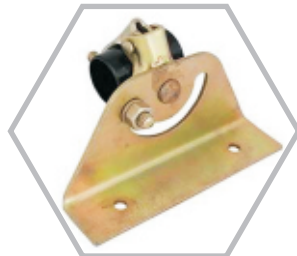
Fence Coupler
PG - 1057



Finial Swivel Clamp
PG - 1058



Finial Double Clamp
PG - 1059



Staircase Coupler
PG - 1060



Roof Coupler
PG - 1061



Ladder Coupler
PG - 1062



Universal Clamp
PG - 1063



Toe Board Clamp
PG - 1064



Single Wedge Coupler
PG - 1065



Swivel Wedge Coupler
PG - 1066



Joint Pin
PG - 1067



Timber Walling Clamp
PG - 1068



Sleeve Coupler
PG - 1069



Put Log Head
PG - 1070



Fixed Double Coupler
PG - 1071



Swivel Coupler with I-Bolt
PG - 1072



Swivel Coupler Toggle Pin
PG - 1073



Swivel Coupler (Oval)
PG - 1074



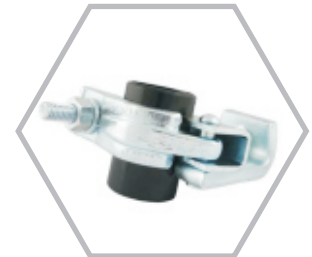
Half Coupler (Oval)
PG - 1075



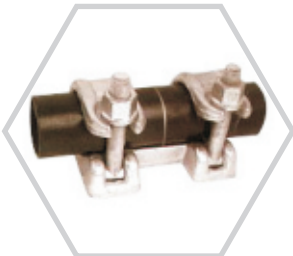
Half Coupler (Oval) with Bolt
PG - 1076



Half Swivel Coupler
PG - 1077



Grave Lock Coupler
PG - 1078



Sleeve Coupler
PG - 1079



Double Coupler (Square)
PG - 1080



Half Coupler (Square)
PG - 1081



Put Log Coupler
PG - 1082



Half Coupler With Ledger Blade
PG - 1083



Toe Board Coupler
PG - 1084



Board Retaining Clamp
PG - 1085



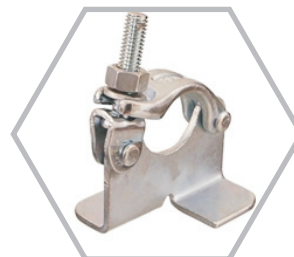
Half Coupler With U-Bracket
PG - 1086



Half Coupler With Toggle Bolt
PG - 1087



Half Coupler With Toggle Pin
PG - 1088



Retaining Coupler
PG - 1089



Put Log Head
PG - 1090



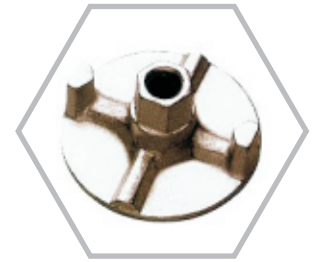
Two Way Wing Nut (Forged)
PG - 1091



Two Way Wing Nut (Casted)
PG - 1092



Three Way Anchor Nut (Forged)
PG - 1093



Two Way Anchor Nut (Casted)
PG - 1094



Anchor Stud
PG - 1095



Brace Lock
PG - 1096



Tension Pin
PG - 1097



G-Ring For Prop
PG - 1098



Brace End
PG - 1099



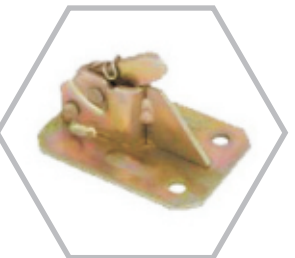
Water Barrier
PG - 1100



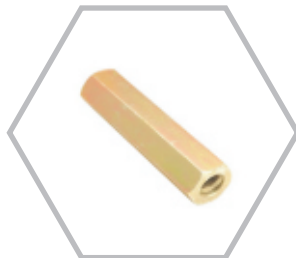
Water Barrier With Disc
PG - 1101



Waller Plate
PG - 1102



Spring Rapid Clamp
PG - 1103



Hexagun Tie Nut
PG - 1104



Clips
PG - 1105



Flanges
PG - 1106

PAAM COMMERCIAL PRIVATE LIMITED

Corporate Office : # 5-3-488, O.T. Road, Osmangunj, Hyderabad -12.

Ph: +91-40-24615104/82, Mobile : +91 98857 58588

E-Mail: info@paamgroup.com, Website: www.paamgroup.com

Branch Offices :

ANDHRA PRADESH

|

KARNATAKA

|

WEST BENGAL

|

ORISSA