

# SCAFFOLDING DIVISION



ANDHRA PRADESH | KARNATAKA | WEST BENGAL | ORISSA | BIHAR

[www.paamgroup.com](http://www.paamgroup.com)

INSPIRED  
BY  
QUALITY  
AND  
SERVICE

Paam Group is a leading contract manufacturer, supplier and exporter of building materials. With more than three decades of experience we provide a one stop solution for all types of scaffolding and shuttering products.

It has traditionally been our endeavor to provide quality materials coupled with committed services. As we all know that construction of any kind is a complex process involving varied materials along with customization; we do not limit ourselves to our standard range of products. We often customize the products as per our customers' specific requirements. The experience gathered by us helps us to provide our clients with the most optimum products at the best prices.

We continuously strive towards providing the best products and have always been the first to provide our customers with innovative and improved products. Our commitment to customers' is highlighted by the fact that we are willing to entertain enquiries for special products that are not part of our range.

Though we have our base office at Hyderabad, we have spread our wings to other geographical locations. Our branches are strategically located in Andhra Pradesh, Karnataka, Orissa, Bihar and West Bengal so as to enable us cater to customers across India with right material at the right place. More branches are in the offing, to help us serve you better.

We have a large clientele which includes some of the most prestigious and world-renowned names in the industry.

## SCAFFOLDING & SHUTTERING PRODUCTS

- > Cuplock System
- > Kwick Stage System
- > H-Frames
- > Walk Way Jally
- > Steel Tubes
- > Acro Spans
- > Props & Jacks
- > Column Clamps
- > Base Plate
- > Pressed and Forged Couplers
- > Joint Pin
- > Tie Rod
- > Shikanja
- Formwork Accessories & Many More . . .

## BITUMINIZED EXPANSION JOINT FILLER BOARDS

## WOOD PRODUCTS

- > Film- Faced Densified Shuttering Plywoods
- > Wooden Batterns
- > Flush Doors
- > Laminated Veneer Lumber
- H/I Beams

# CUP LOCK SYSTEM



**VERTICAL STANDARD**  
ITEM CODE : PG -1001

Size (Mtr.)	WT. (Kg)
1.0	4.60
1.2	6.10
1.5	6.80
1.8	8.50
2.0	9.30
2.3	10.50
2.5	11.30
3.0	13.80

**LEDGER**  
ITEM CODE : PG -1002

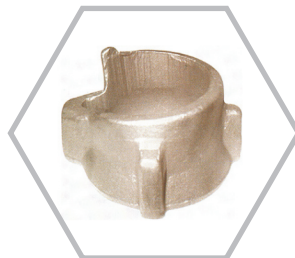
Size (Mtr.)	WT. (Kg)
0.60	2.60
0.90	3.50
1.00	3.90
1.20	4.40
1.30	4.80
1.60	5.70
1.80	6.30
2.50	8.80

**INTERMEDIATE TRANSOM**  
ITEM CODE : PG -1003

Size (Mtr.)	WT. (Kg)
0.565	3.70
0.795	4.70
1.200	6.10
1.300	6.40
1.800	8.10
2.500	11.20



**Bottom Cup**  
PG - 1004



**Top Cup Four Lug (Forged)**  
PG - 1005



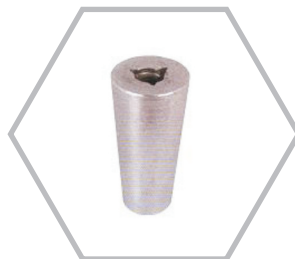
**Top Cup Four Lug (Casted)**  
PG - 1006



**Top Cup Three Lug (Forged)**  
PG - 1007



**Spigot**  
PG - 1008



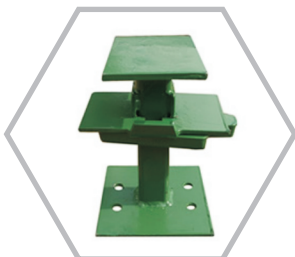
**Steel Cone**  
PG - 1009



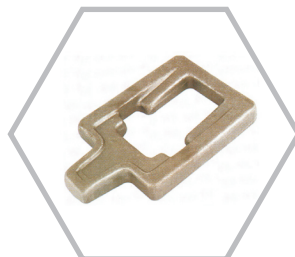
**Ledger Swivel**  
PG - 1010



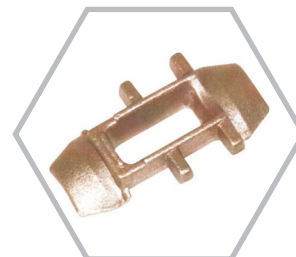
**Ledger Blade**  
PG - 1011



**Drop Head**  
PG - 1102



**Wedge Plate**  
PG - 1013

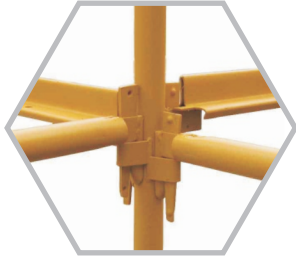


**Transom Blade**  
PG - 1014



**Transom**  
PG - 1015

# KWICK STAGE SYSTEM



**VERTICAL STANDARD**  
ITEM CODE : PG -1016

Size (Mtr.)	WT. (Kg)
1.0(3'.3")	6.20
2.0(6'.6")	11.70
3.0(9'.9")	17.20

**LEDGER**

ITEM CODE : PG -1017

Size (Mtr.)	WT. (Kg)
1.2(4')	5.55
1.8(6')	6.95
2.4(8')	8.85

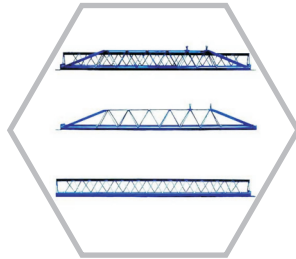
**BOARD BRACKET**

ITEM CODE : PG -1018

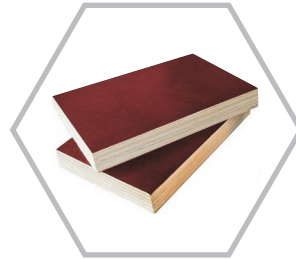
Size (Mtr.)	WT. (Kg)
1.2(4')	9.70
1.8(6')	13.10
2.4(8')	16.05



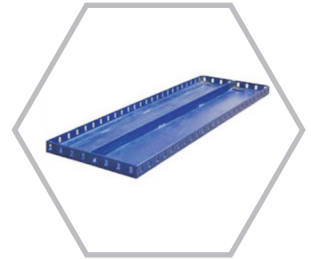
**H - Frame**  
PG - 1019



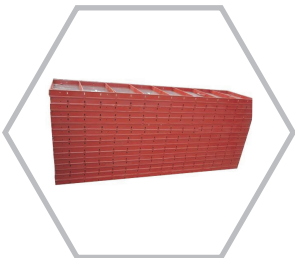
**Acro Span**  
PG - 1020



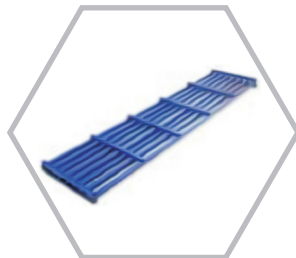
**Shuttering Plywood**  
PG - 1021



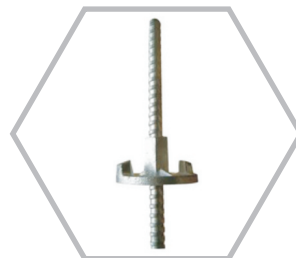
**Wall Form Panels**  
PG - 1022



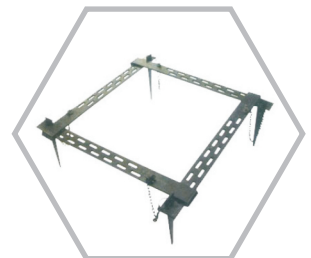
**Plywood Wall Form Panels**  
PG - 1023



**Walk Way Jally**  
PG - 1024



**Tie Rod**  
PG - 1025



**Column Clamp**  
PG - 1026



**Prop Base**  
PG - 1027



**Steel Tubes**  
PG - 1028



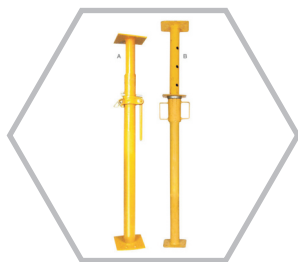
**Gogo Clamp**  
PG - 1029



**Castor Wheel**  
PG - 1030



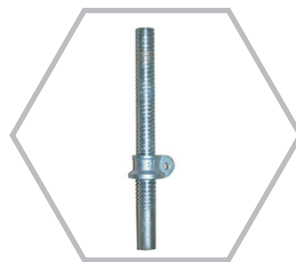
# JACKS & PROPS



Adjustable Prop  
PG - 1031



Push-Pull Prop  
PG - 1032



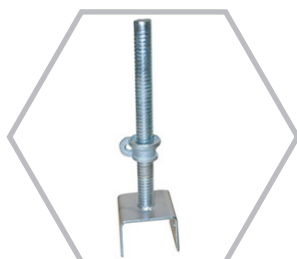
Universal Jack (Solid)  
PG - 1033



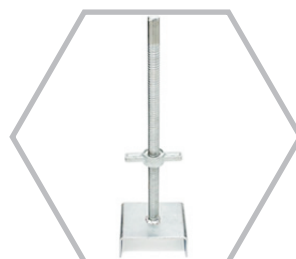
Universal Jack (Hollow)  
PG - 1034



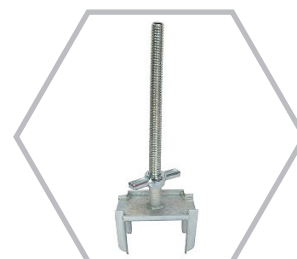
U - Head Jack (Hollow)  
PG - 1035



U - Head Jack (Solid)  
PG - 1036



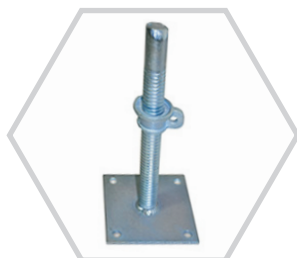
U - Head Jack Wide (Solid)  
PG - 1037



Fork Head Jack  
PG - 1038



Swivel Base Jack  
PG - 1039



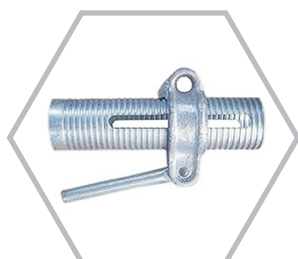
Base Jack (Solid)  
PG - 1040



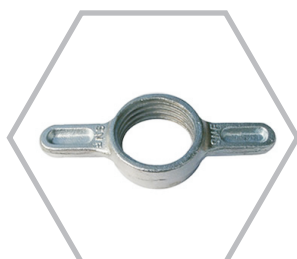
Base Jack (Hollow)  
PG - 1041



Base Plate  
PG - 1042



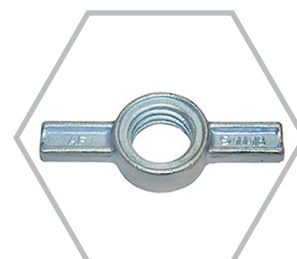
Prop Sleeve With Handle  
PG - 1043



Prop Nut (Forged)  
PG - 1044



Jack Nut (Casted)  
PG - 1045



Jack Nut (Forged)  
PG - 1046



Jack Nut With Handle (Forged)  
PG - 1047



Jack Nut With Handle (Casted)  
PG - 1048



Jack Nut (L&T Type)  
PG - 1049



Jack Nut  
PG - 1050



Fixed Double Coupler  
PG - 1051



Swivel Coupler  
PG - 1052



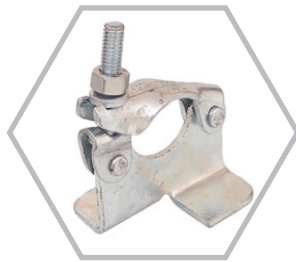
Grave Lock Coupler  
PG - 1053



Half Swivel Coupler  
PG - 1054



Put Log Coupler  
PG - 1055



Retaining Coupler  
PG - 1056



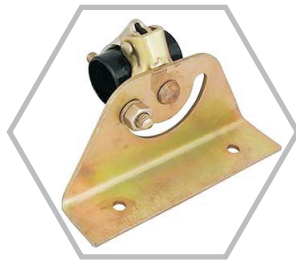
Fence Coupler  
PG - 1057



Finial Swivel Clamp  
PG - 1058



Finial Double Clamp  
PG - 1059



Staircase Coupler  
PG - 1060



Roof Coupler  
PG - 1061



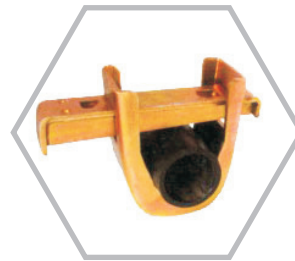
Ladder Coupler  
PG - 1062



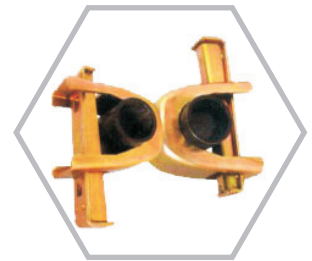
Universal Clamp  
PG - 1063



Toe Board Clamp  
PG - 1064



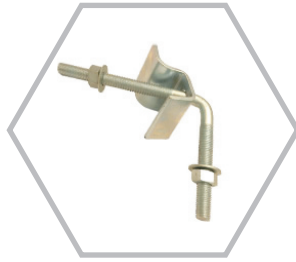
Single Wedge Coupler  
PG - 1065



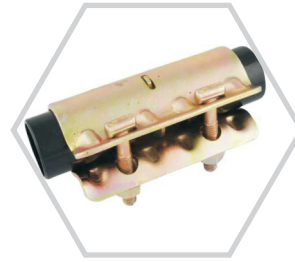
Swivel Wedge Coupler  
PG - 1066



Joint Pin  
PG - 1067



Timber Walling Clamp  
PG - 1068



Sleeve Coupler  
PG - 1069



Put Log Head  
PG - 1070



Fixed Double Coupler  
PG - 1071



Swivel Coupler with I-Bolt  
PG - 1072



Swivel Coupler Toggle Pin  
PG - 1073



Swivel Coupler (Oval)  
PG - 1074



Half Coupler (Oval)  
PG - 1075



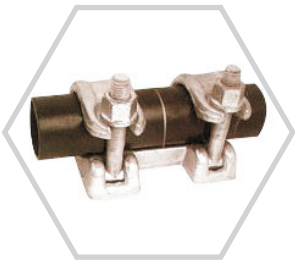
Half Coupler (Oval) with Bolt  
PG - 1076



Half Swivel Coupler  
PG - 1077



Grave Lock Coupler  
PG - 1078



Sleeve Coupler  
PG - 1079



Double Coupler (Square)  
PG - 1080



Half Coupler (Square)  
PG - 1081



Put Log Coupler  
PG - 1082



Half Coupler With Ledger Blade  
PG - 1083



Toe Board Coupler  
PG - 1084



Board Retaining Clamp  
PG - 1085



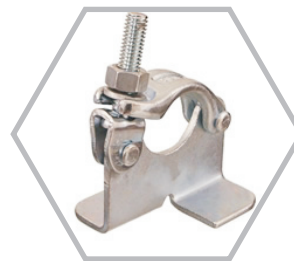
Half Coupler With U-Bracket  
PG - 1086



Half Coupler With Toggle Bolt  
PG - 1087



Half Coupler With Toggle Pin  
PG - 1088



Retaining Coupler  
PG - 1089



Put Log Head  
PG - 1090

# ACCESSORIES



Two Way Wing Nut (Forged)  
PG - 1091



Two Way Wing Nut (Casted)  
PG - 1092



Three Way Anchor Nut (Forged)  
PG - 1093



Two Way Anchor Nut (Casted)  
PG - 1094



Anchor Stud  
PG - 1095



Brace Lock  
PG - 1096



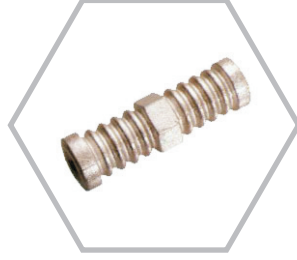
Tension Pin  
PG - 1097



G-Ring For Prop  
PG - 1098



Brace End  
PG - 1099



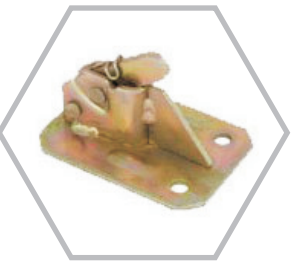
Water Barrier  
PG - 1100



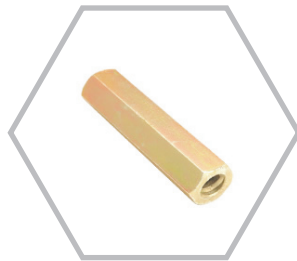
Water Barrier With Disc  
PG - 1101



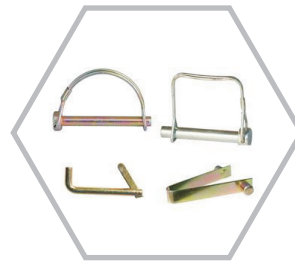
Waller Plate  
PG - 1102



Spring Rapid Clamp  
PG - 1103



Hexagun Tie Nut  
PG - 1104



Clips  
PG - 1105



Flanges  
PG - 1106

## PAAM COMMERCIAL PRIVATE LIMITED

AN ISO 9001:2008 COMPANY

Corporate Office : # 5-3-488, O.T. Road, Osmangunj, Hyderabad -12.

Ph: +91-40-24615104/82, Mobile : +91 98857 58588

E-Mail: info@paamgroup.com, Website: www.paamgroup.com

Branch Offices :

ANDHRA PRADESH

|

KARNATAKA

|

WEST BENGAL

|

ORISSA

|

BIHAR